

# Aa Knockout®

FOUNDRY: Hoefler & Co. DESIGNER: Jonathan Hoefler CLASSIFICATION: Grotesque Sans

FAMILY: Aa

Knockout's nine-width, four-weight family offers a range of typographic voices.

# Switch-hitter

legs shoulder-width apart

# CASSIUS CLAY

A POWERFUL STRAIGHT PUNCH THROWN WITH THE REAR HAND

# CHECK HOOK

## BEST PRACTICES

This is not a "crystal goblet" kind of design. Knockout is at its best in large sizes. Use it for headlines, branding and packaging.

## ROOTS

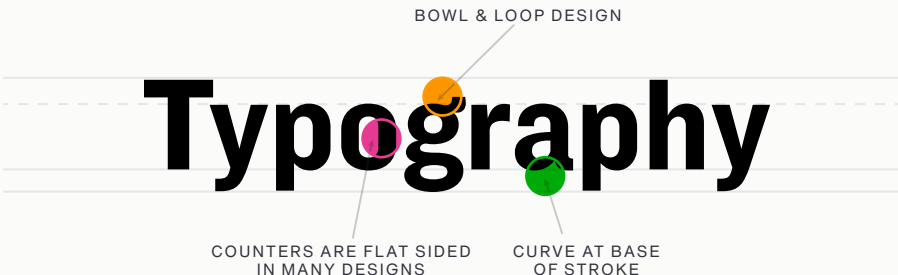
Knockout is an interpretation of the sans serif typefaces that supplied American job printers in the late nineteenth century. Its thirty-two styles reference the tall, condensed wood types used for posters and advertising. It is an important preservation of American vernacular typography.

## FONT FACTS

- Knockout is a reimagining of Hoefler's earlier Champion Gothic headline series, released in 1991.
- Champion Gothic is a collection of bold display faces inspired by American wood type. Organized not by weight but width, its unusual family tree aided designers resolve the challenge of fitting unruly headlines.

## LEGIBILITY

Knockout is essentially a display design. While it does not rank high on the text legibility scale, its distinctive letter forms are eye-catching and make a powerful statement.



## HOW TO SPOT

- g** Distinctive up-turned ear on g
- a** Curved base to vertical stroke of a
- i j** Square dots on i, j and in punctuation
- k** Lower diagonal of k meets upper at half-way up the stroke

## ALTERNATE CHOICES

- ITC Franklin Gothic™
- Akzidenz-Grotesk®
- Classic Grotesque™
- Trade Gothic Next®

## PERFECT PAIRINGS

- Frutiger® Serif
- Requiem®
- Palatino® Nova
- Serifa®