

Aa

Neue Plak™

FOUNDRY	DESIGNER	CLASSIFICATION
Stempel (Original Design) Monotype (2018 Revival)	Paul Renner Linda Hintz Toshi Omagari	Grotesque Sans

FAMILY Aa

Neue Plak offers 60 weights, including a new text version that pairs with the display weights. This allows the design to perform well in print and digital environments – and within a wide range of applications.

Sea-faring peoples known as the Norsemen

POÄNG

Scandinavian Peninsula

Byzantine Emperor Theophilos

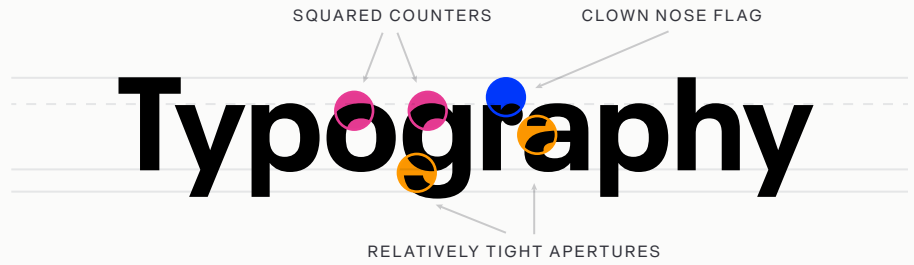
THE ISLAND OF **BJÖRKÖ**

LEGIBILITY ☰

Modest stroke width variations, letters with a distinct personality and simple character shapes make for a highly legible design in a wide range of sizes. Relatively closed apertures and the single-storey g, however, detract from an excellent score.

HOW TO SPOT 🔍

r	Round flag on lowercase r
i j	Round dots on lowercase i and j
t	Curved tail on lowercase t
G	Tight aperture on cap G



- ALTERNATE CHOICES** ↩
- Akzidenz-Grotesk® Next
 - Classic Grotesque™
 - Gotham®
 - ITC Franklin Gothic™

- PERFECT PAIRINGS** ♥
- Egyptian Slate™
 - Frutiger® Serif
 - ITC Galliard®
 - Palatino® Nova

BEST PRACTICES 🔖

While “Text” weights have been designed, Neue Plak is essentially a display design. Neue Plak’s somewhat quirky design traits, make it an excellent alternative to more structured geometric sans serif typefaces.

ROOTS 🌱

Plak was originally designed as wood type in the late 1920s. Neue Plak is an extended and updated version of a 1928 typeface, by Paul Renner. It blends an industrial exterior with flashes of unexpected playfulness.

FONT FACTS ℹ

- Despite being designed by Paul Renner, Plak never reached the popularity of his, earlier, Futura design.
- Hintz and Omagari based their updated and extended version on the original Plak wood type, uncovering lost details and incorporating them as alternate characters – including the choice between open or strikethrough counters.