

# Rockwell Nova®

## FOUNDRY

Monotype

## DESIGNER

Monotype Design Studio

## CLASSIFICATION

Slab Serif

## WHY ROCKWELL NOVA



- Rockwell Nova evokes a feeling of straightforward honesty. Based on the original Rockwell design, it's an adaptable face that is excellent for branding, headlines and other display uses. The simple shapes and robust serifs of Rockwell Nova also make the lighter weights a good choice for short blocks of text copy in both print and on-screen environments.



## ANCESTRY



- The story of Rockwell begins with the London type founder, Vincent Figgins, who released the first successful slab serif typeface in 1815. It was a cap-only design called "Antique" and offered in three sizes. By 1825, more slab serif typefaces appeared, now with lowercase characters.
- The popularity of slab serif designs waxed and then waned again during the first three decades of the twentieth century, until geometric sans serif typefaces became popular. Soon, new slab serif typefaces patterned after geometric shapes began to be released. The Rockwell family, first issued in 1933, is Monotype's powerful answer to this typographic style.
- Based on the original Monotype Rockwell suite of fonts but meticulously updated to current standards, Rockwell Nova is an exceptionally durable design that suggests feelings of frank honesty when set in text composition. It is also an exceptionally versatile display design that can be used for headlines, subheads – virtually any place where a strong typographic presence is required.



# Kentucky Bourbon

ROCKWELL NOVA

# Kentucky Bourbon

ITC LUBALIN GRAPH

## PAIRING ROCKWELL NOVA



- Old Style serif designs like [ITC Berkeley Old Style](#), [Legacy® Serif](#), or [Galliard®](#) make for dynamic contrasting pairings to Rockwell Nova.
- Geometric sans, such as [Futura® Now](#) and [ITC Avant Garde Gothic®](#), also create a typographic counterpoint to Rockwell Nova.
- Typefaces like [Metro® Nova](#) and [Classic Grotesque](#) create a similar vibe, but also contrast well with Rockwell Nova.

## CLASSIC FACTS



- Rockwell's precursor was a design called Litho Antique, produced by the Inland Type Foundry in 1910. American Type Founders revived the face in the 1920s, with Morris Fuller Benton cutting several new weights. The Monotype Corporation produced its version of Rockwell in 1933
- The capital "O" in Rockwell is a perfect circle, which is rare in serif typefaces. Geometric construction is a hallmark of the design.

## FAMILY



Rockwell Nova Light

Rockwell Nova Regular

**Rockwell Nova Bold**

**Rockwell Nova Extra Bold**

Rockwell Nova Condensed Light

Rockwell Nova Condensed

**Rockwell Nova Condensed Bold**

*Rockwell Nova Light Italic*

*Rockwell Nova Italic*

***Rockwell Nova Bold Italic***

***Rockwell Nova Extra Bold Italic***

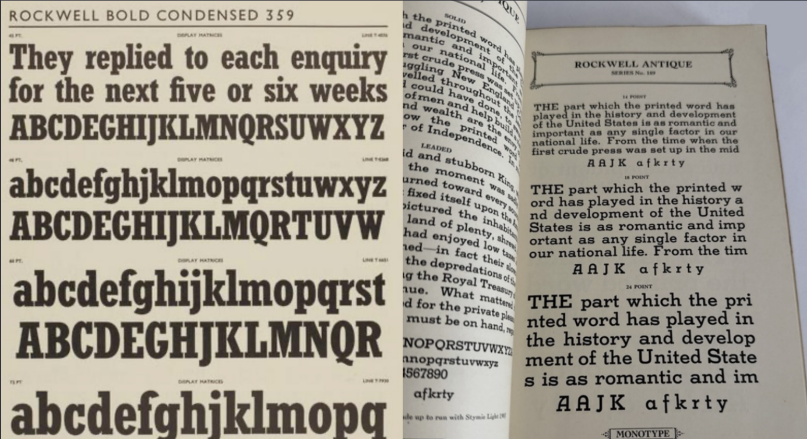
*Rockwell Nova Condensed Light Italic*

*Rockwell Nova Condensed Italic*

***Rockwell Nova Condensed Bold Italic***



EXCEPTIONAL CHARACTERS



The MyFonts store from Monotype offers more than 130,000 desktop and Web font products for you to preview, purchase and download. You can also learn about new typeface releases and discover typographic tips and techniques.

N° 003 | 100



Buy



Link

Copyright

2025

